

# Collection



Issue #5





# SOLUTION

## OLP Solving Your Storage Needs

We are a proud Australian owned wholesaler of the STEELCO range office furniture. We have been distributing their products to Australian and New Zealand companies since 2009.

Specialising in dealing directly with resellers to provide the highest quality steel storage solutions to the end-user. Our resellers enjoy an unsurpassed level of service that is second to none in our industry, due to our never ending commitment to continually improve both product quality and customer service. Our substantial stock holding ensures orders are delivered when required and ready for use by your customer.

We are committed to assisting our resellers to provide support to their customers with the purpose of making STEELCO the preferred brand for all steel office furniture needs.

# OLP PROUDLY CERTIFIED



**AFRDI** operates a system of certification for furniture and furniture components with the aim of lifting quality, strength, durability, safety, suitability for purpose and, ultimately, sustainability through increased product durability.



**APCO** is a not for profit organisation leading the development of a circular economy for packaging in Australia. Our vision is a packaging value chain that collaborates to keep packaging materials out of landfill and retains the maximum value of the materials, energy and labour within the local economy.



**Australian Trusted Trader** reduces red tape for Trusted Traders at the border, improves certainty in export markets, and expedites the flow of their cargo in and out of Australia, which means faster access to market.



**BIFMA Compliant** is an industry-wide registry of furniture products that conform to BIFMA safety and durability standards. Compliant provides clarity to the market by differentiating products that meet established industry standards.



**ISO (International Organization for Standardization)** is the world's largest developer and publisher of International Standards. Over 20 million businesses worldwide are certified or recognized. In Australia, the most common ISO standard for certification is ISO 9001 Quality Management Systems.



**Product stewardship** acknowledges those involved in designing, manufacturing, and selling products have a responsibility to ensure those products or materials are managed in a way that reduces their environmental and human health impacts, throughout the life-cycle and across the supply chain.



**FSC (Forest Stewardship Council)**, an international non-profit organisation founded in 1993 with a mission to create responsible forestry. It is the only forest verification scheme endorsed by leading environmental charities like WWF, the Woodland Trust and Greenpeace.



**Sedex** is the world's largest data platform for supply chain assessment, to store, analyse, share, and report on sustainability practices.

# CONTENTS

<b>OLP STEELCO</b>		<b>Organised - STEELCO concept</b>	52
Certifications	4	STEELCO Vertical Cabinet Range	54
<b>Secure - Experts in Lockers</b>	6	Mercury Vertical Filing Cabinet Range	56
Laminate Standard Locker Range	8	Lateral Filing Cabinet Range	58
Laminate Custom Locker Range	10	Classic Mobile Pedestal Range	60
Education Hybrid Locker Range	12	Trimline Mobile Pedestal Range	61
Mini Locker Range	14	Trimline Hybrid Mobile Pedestal Range	62
Mail Slot Locker	16	Slimline Mobile Pedestal Range	63
Flush Door Steel Locker Range	18	Mini Mobile Pedestal Range	64
Steel Locker Range	20	Mobile Caddy Range	65
Heavy Duty School Locker Range	22	Stationery Cabinet Range	66
Laptop, Phone & Key Locker Range	24	Bookcase Range	67
ABS Locker Range	26	Personnel Wardrobe Range	68
HDPE Locker Range	28	Multi-functional Cabinet Range	69
Heavy Duty Weather Resistant Locker Range	30	Plan Cabinet Range	70
<b>Customisation - STEELCO offers customisation</b>	32	Pull-out Tower Range	71
Steel Locker Colour Range	34	Tambour Cabinet Range	72
Laminate Locker Colour Range	36	Sliding Door Cabinet Range	74
ABS & HDPE Locker Colour Range	37	Snughooks	76
Customised Lockers	38	Uni-Shelf	77
Power & Smart Lockers	40	Pigeonhole Shelving	78
Locker Accessories	42	T-Span Shelf®	79
Locking Mechanisms	44	Aislesavers® - Easy Slide	80
<b>Office Space Living</b>	46	Aislesavers® - Easy Drive	82
Edge Modular Range	48	Aislesavers® - Accessories	84
		Height Adjustable Desks	86
		Norba Workstation	88
		Chairs	90
		<b>Recent Projects</b>	92
		<b>Contact us</b>	95





# SECURE

## Experts in Lockers

OLP offer a comprehensive range of robust STEELCO lockers to suit a wide range of demanding conditions or environments.

Designed and manufactured to the highest standards, these lockers are available in a variety of sizes, materials, colours and finishes.

We pride ourselves on offering exceptional locker customisation options to suit every work place. Read on and view all of our locker types.

# STEELCO LAMINATE STANDARD LOCKER RANGE

Our Laminate Locker range is designed to be of superior quality and workmanship. With a range of lock options, seat, stand and benches available, you can brighten up your tired staff areas with customised and sophisticated colours and designs.

Flush-mounted doors with soft-closing hinges.  
Key lock as standard with additional locking mechanisms available.

**Locker Carcass:** Available in 16mm MR board.

**Locker Doors:** Available in MR board.

- ▶ Stable and durable
- ▶ Resistant to damage
- ▶ Easy clean
- ▶ Low maintenance
- ▶ FSC Certified
- ▶ 10 year warranty

## TECHNICAL SPECIFICATIONS

Standard Sizes (mm)

1850H x 400W x 500D

## MULTIPLE LOCKING OPTIONS

### STOCK COLOURS (AUSTRALIA)



Laminate Standard locker range stocked in Australia.  
Custom colours available, please contact your local sales representative to find the best fit for you.



Fernwood Gym

## Door Configurations Available



One Door



Two Door



Three Door



Four Door



Two Door Combo

# STEELCO LAMINATE CUSTOM LOCKER RANGE

Our Laminate Locker range is designed to be of superior quality and workmanship. With a range of lock options, seat, stand and benches available, you can brighten up your tired staff areas with customised and sophisticated colours and designs.

Flush-mounted doors with soft-closing hinges.

Key lock as standard with additional locking mechanisms available.

**Locker Carcass:** Available in 16mm MR board.

**Locker Doors:** Available in MR board.

- ▶ Stable and durable
- ▶ Resistant to damage
- ▶ Easy clean
- ▶ Low maintenance
- ▶ FSC Certified
- ▶ 7 year warranty

## TECHNICAL SPECIFICATIONS

### Standard Sizes (mm)

1850H x 300W x 500D

1850H x 400W x 500D

## MULTIPLE LOCKING OPTIONS

## STOCK COLOURS AVAILABLE

With various wood finishes and colours available, please contact your local sales representative to find the most suitable colours and configuration.

Visit [olp.com.au](http://olp.com.au) to view colour range



## Door Configurations Available



One Door

Two Door

Three Door

Four Door

Two Door Combo

# STEELCO EDUCATION HYBRID LOCKER RANGE

The STEELCO Education Hybrid lockers are a tough working locker for the school environment. Designed with a smooth powder coated steel frame and laminate door, they are the ideal solution for any high traffic, heavy use and busy areas.

**Size Modifications:** Custom-sized lockers can be designed and manufactured to suit specific uses.

**Colours:** Various different colours available for frames, doors and carcasses.

- ▶ Durable powder coating steel frame
- ▶ 180-Degree opening offset piano hinge
- ▶ Flush-mounted doors
- ▶ Padlatch hasp as standard
- ▶ 18mm Door - MDF
- ▶ 10 year product warranty



## TECHNICAL SPECIFICATIONS

### Standard Sizes (mm)

- 970H x 725W x 580D
- 970H x 1075W x 580D
- 1860H x 725W x 580D
- 1860H x 1075W x 580D
- 1860H x 1434W x 580D

## MULTIPLE LOCKING OPTIONS

## STANDARD COLOURS AVAILABLE

(10-12 WEEK LEAD TIME)

### DOORS/LAMINATE

● Light Grey

### FRAME/STEEL

● Black

Custom colours available visit [olp.com.au](http://olp.com.au)



Maranatha College

# STEELCO MINI LOCKER RANGE

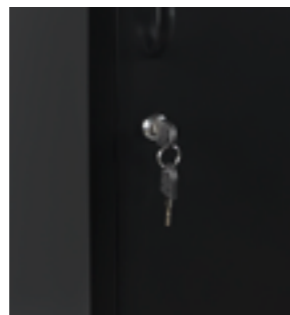
The **STEELCO Mini Locker** is ideal for your home or office environment, creating a space efficient storage solution. It has height adjustable shelves and mounting holes for attaching it to the wall. Includes a keylock system so the locker is secure.

**Size Modifications:** Lockers can be designed to your size specifications.

**Colours:** Different colours can be applied to individual units or doors.

**Locker Shelf:** A small shelf inside the locker unit to separate items.

- ▶ 2 shelves included in 1080H unit, 1 shelf included in 720H unit.
- ▶ Shelf capacity of 20kg
- ▶ Key lock as standard
- ▶ Magnetic closing mechanism
- ▶ Quality powder-coated finish
- ▶ 10 year product warranty



## TECHNICAL SPECIFICATIONS

### Standard Sizes (mm)

1080H x 350W x 460D

720H x 350W x 460D

## KEY LOCK

### STOCK COLOURS AVAILABLE

 White Satin

 Black Satin





# STEELCO MAIL SLOT LOCKER

**STEELCO Mail Slot Lockers** are designed to securely store personal items of varying sizes. Designed to fit seamlessly into a workstation setup, the locker units come with combination locks and mail slots as standard.

- ▶ Unique 12mm slim edge for a modern look
- ▶ Flush-mounted doors with a 180-degree opening capability
- ▶ Mail slot as standard
- ▶ Combination lock as standard
- ▶ Optional lock options available on lead time
- ▶ Quality powder coated finish
- ▶ 10 year product warranty

## TECHNICAL SPECIFICATIONS

### Standard Sizes (mm)

1200H x 900W x 400D

## STOCK COLOURS AVAILABLE

 White Satin

**Size Modifications:** Lockers can be designed to your size specifications.

**Colours:** Different colours can be applied to individual units or doors.

**Power Options:** Compartments can be fitted with GPO and USB outlets.



OLP - Storage



# STEELCO FLUSH DOOR STEEL LOCKER RANGE

**STEELCO Flush Door Steel Lockers** feature a design that includes a flush door closing mechanism. These lockers have been designed to fit into any modern commercial space, with a wide range of customisation options to make the units unique.

**Size Modifications:** Lockers can be designed to your size specifications.

**Colours:** Different colours can be applied to individual units or doors.

**Power Options:** Compartments can be fitted with GPO and USB outlets.

**Locker Shelf:** A small shelf inside the 2 door locker units to separate items.

**Education:** Robust version available suitable for education and heavy use with thicker gauge steel and alternate lock options.

- ▶ Quality powder coated steel
- ▶ 180 degree opening capability
- ▶ Flush mounted doors
- ▶ Easy clean
- ▶ Low maintenance
- ▶ Sustainable
- ▶ 10 year warranty

## TECHNICAL SPECIFICATIONS

### Standard Sizes (mm)

1800H x 400W x 500D  
90mmH Plinth

## VARIOUS LOCK OPTIONS

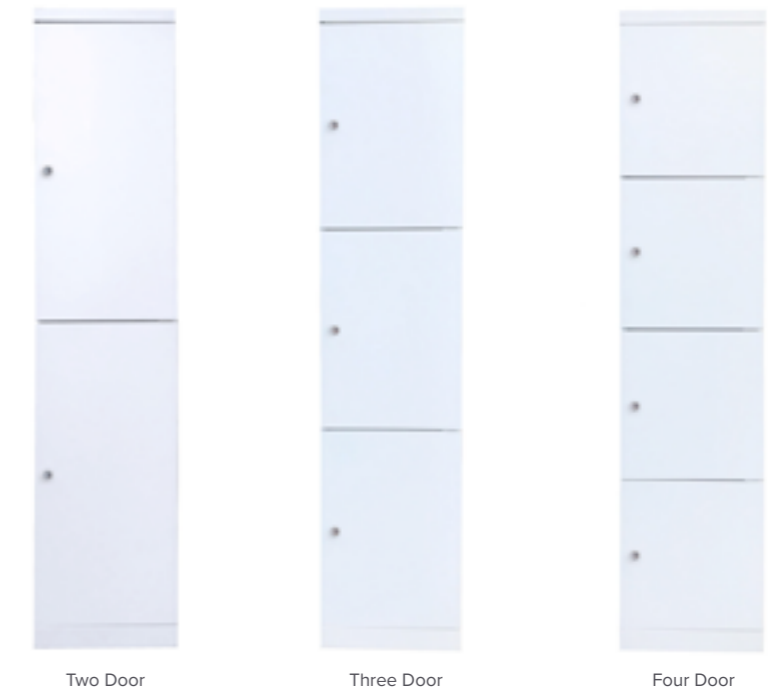
### STOCK COLOURS AVAILABLE

 White Satin

 Black Satin

6 and 8 door Flush Door Steel Lockers available in stock. Single door Flush Door Steel lockers are not a stocked item. Lead time 10-12 weeks.

**Heavy Duty Flush Door Steel Lockers:** Robust version available suitable for education and heavy use environments with thicker gauge steel and alternate lock options. Contact your sales representative to find out more.



Door Configurations Available

# STEELCO STEEL LOCKER RANGE

We provide a comprehensive range of robust steel lockers to suit the demanding conditions of your school, workplace and home office environment. Our lockers are designed and manufactured to the highest standards and are available in a variety sizes and powder coated finishes.

**Size Modifications:** Lockers can be designed to your size specifications.

**Perforation Patterns:** Unique patterns can be designed to fit in with your branding.

**Acoustic Panels:** Locker doors can be fitted with sound absorbing material to minimise noise in any environment.

**Colours:** Different colours can be applied to individual units or doors.

**Power Options:** Compartments can be fitted with GPO, wireless and USB outlets.

**Default Accessories:** A hat shelf and a clothes rod included inside the 1 door locker unit; a clothes rod included inside the 2 door and 3 door locker units.

## TECHNICAL SPECIFICATIONS

### Standard Sizes (mm)

1830H x 305W x 457D

1830H x 380W x 457D

### Additional and adjustable shelves available

- ▶ Robust and resistant to damage
- ▶ 180 degree opening capability
- ▶ Flush mounted doors
- ▶ Easy clean
- ▶ Low maintenance
- ▶ Recyclable
- ▶ 10 year warranty

## MULTIPLE LOCKING OPTIONS

### STOCK COLOURS AVAILABLE

 Silver Grey

 2 Door combo also stocked in white

**100% customisable configurations and colours.**  
**STEELCO powder coat colour range see page 34.**



**OLP - Storage**

**Door Configurations Available**

One Door

Two Door

Three Door

Four Door

Six Door

Eight Door

Twelve Door

Two Door Combo

# STEELCO HEAVY DUTY SCHOOL LOCKER RANGE

Heavy Duty School Lockers are designed to withstand all the activities encountered from being in a busy and high traffic school environment. The carcass is double-skinned thick steel, making them an ideal storage unit for schools and colleges. The locker features flush mounted doors with a 180-degree opening capability for easy access.

**Size Modifications:** Custom-sized lockers can be designed and manufactured to suit specific uses.

**Banking:** Lockers come in single starters or pre-banked in two or three lockers wide with a shared carcass for added strength, cost efficiency and larger internal space.

**Colours:** Individual units and even individual doors can be custom painted to different colours.

- ▶ Double skinned thick doors
- ▶ Ventilation slots in each locker
- ▶ Quality powder coated finish
- ▶ 10 year warranty



## TECHNICAL SPECIFICATIONS

### Standard Sizes (mm)

1830H x 380W x 580D

## MULTIPLE LOCKING OPTIONS

## STOCK COLOURS AVAILABLE

 Light Grey Doors and Body

 Dark Grey Frame

100% customisable configurations and colours.  
STEELCO powder coat colour range see page 34.



Presbyterian Ladies College

# STEELCO LAPTOP, PHONE & KEY LOCKER RANGE

STEELCO Laptop Lockers provide a high-density storage option to safely and securely store your tablets and laptops. With the need of mobile phones in day to day life, we provide an efficient storage option to securely and safely store a small array of items that are essential in this day and age such as mobile phones and keys. The laptop lockers are also available in powered options, transforming the lockers into a charging station.

**Size Modifications:** Custom-sized lockers can be designed and manufactured to suit specific uses.  
**Powered lockers:** Compartments can be fitted with GPO, USB and wireless options.

- ▶ Nameplate insert available
- ▶ 180-degree opening capability
- ▶ Flush-mounted doors
- ▶ Quality powder coated finish
- ▶ 10 year warranty

In-Built power options available

## TECHNICAL SPECIFICATIONS

Laptop Lockers Standard Sizes (mm)  
 1830H x 380W x 457D

## STOCK COLOURS AVAILABLE

 Silver Grey



Custom colours available in the full STEELCO steel colour range

## NON-STOCKED CUSTOM COLOURS AVAILABLE

- |  |   |   |  |
|--|---|---|--|
|  Satin Silver |  Light Grey  |  Grey        |  Dark Grey    |
|  Blaze Blue   |  Oxford Blue |  Lawn Green  |  Beige        |
|  Signal Red   |  Orange      |  Dark Yellow |  Lemon Yellow |

\*Soft wiring accessories sold separately

## TECHNICAL SPECIFICATIONS

Mobile Phone Lockers Standard Sizes (mm)  
 30 Door - 940H x 900W x 225D  
 60 Door - 1810H x 900W x 225D

## STOCK COLOUR AVAILABLE

(CARCASS/BASE)

 Graphite Ripple

## STOCK COLOUR AVAILABLE

(DOORS)

 White Satin



The Rising



# STEELCO ABS LOCKER RANGE

The ABS (Acrylonitrile Butadiene Styrene) Plastic Locker is a strong, durable and colourful addition to any facility. Built to withstand tough and intense use where steel lockers may not be as suitable. Our flexible design of the lockers allows multiple options of customisation to suit your specific needs.

**Size Options:** With a variety of door sizes available, it is possible to create any configuration to build a unit that suits all your requirements.

**Sturdy and Strong:** The locker doors have been tested to withstand a 1000kg force.

**Weather Resistant:** The ABS lockers are UV resistant and water resistant\*, making them the perfect addition to swimming pools and gym areas (amongst others).

Chat with your sales representative to discuss which is the ideal locker for your environment.

\*Please note lockers are not waterproof.



- ▶ Lightweight
- ▶ Adjustable shelves
- ▶ Water resistant\*
- ▶ Heavy Duty material
- ▶ Recyclable
- ▶ 5 year warranty

## TECHNICAL SPECIFICATIONS

### Standard Sizes (mm)

- Full Height - 1950H x 382W x 500D
- Half Height - 1020H x 382W x 500D
- Third Height - 710H x 382W x 500D

- Quarter Height - 555H x 382W x 500D
- Sixth Height - 400H x 382W x 500D

## MULTIPLE LOCKING OPTIONS

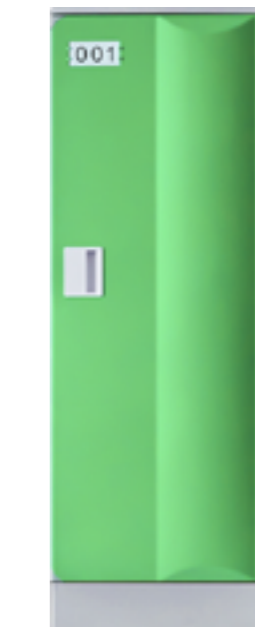
### STOCK COLOURS AVAILABLE

-  Red
-  Yellow
-  Blue
-  Green

### NON-STOCK COLOURS AVAILABLE

-  Pink
-  Light Blue
-  Coffee
-  Grey
-  Light Green
-  Orange
-  White
-  Wood Grain\*

\*Pricing differs for "Non-stocked" colours



# STEELCO HDPE LOCKER RANGE

Lockers that can outlast their use are hard to find. The HDPE (High-Density Polyethylene) Lockers defy this idea. Designed to suit grueling amounts of use in all conditions, these lockers are extremely strong making them the ideal addition to any school, fitness centre, or swimming pools (amongst other settings).

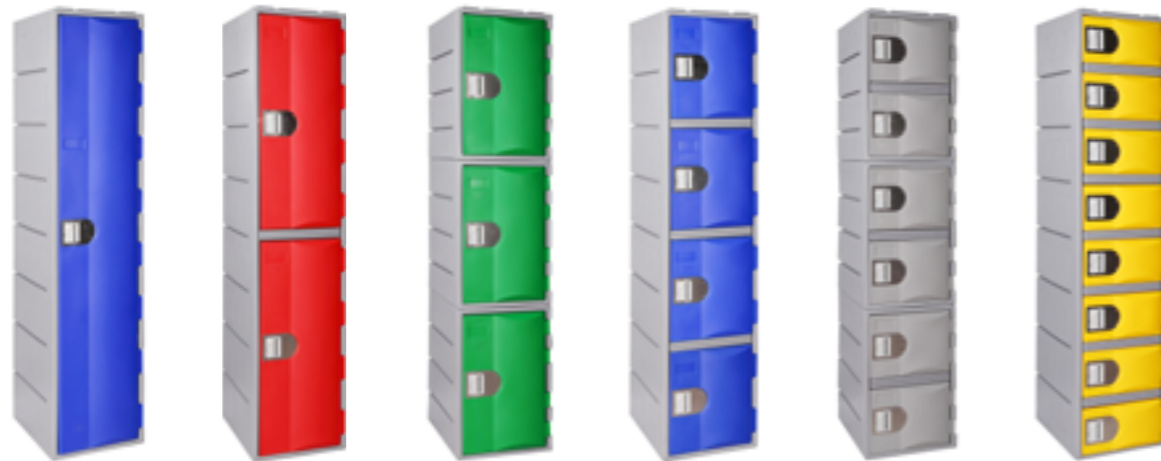
**Size Options:** With a variety of door sizes available locker arrangements can combine alternate sizes to build a unit that suits your requirements.

**Weather resistant:** The HDPE Lockers (High-Density Polyethylene) are water resistant\* and UV resistant, perfect for all indoor and outdoor applications.

**Colours:** Individual units and even individual doors can have different colours to brighten up any space.

Chat with your sales representative to discuss which is the ideal locker for your environment.

- ▶ Adjustable shelves
- ▶ Water resistant\*
- ▶ UV resistant
- ▶ Strong and resistant to damage
- ▶ Easy clean
- ▶ Low maintenance
- ▶ Recyclable
- ▶ 20 year indoor/8 years outdoor warranty



One Door

Two Door

Three Door

Four Door

Six Door

Eight Door

\*Please note lockers are not waterproof.

## TECHNICAL SPECIFICATIONS

### Standard Sizes (mm)

Full Height - 1810H x 385W x 500D

Half Height - 910H x 385W x 500D

Third Height - 610H x 385W x 500D

Quarter Height - 460H x 385W x 500D

80mm base optional

## MULTIPLE LOCKING OPTIONS

**NEW** Now available in a 450mm wide option with base and sloping top

Ask your sales representative about the 450mm wide HDPE today!



## STOCK COLOURS AVAILABLE (DOORS)

- Red
- Yellow
- Green
- Blue
- Grey
- Coffee\*

\*Special order 10-12 weeks lead time

# STEELCO HEAVY DUTY WEATHER RESISTANT LOCKER RANGE

The ultimate outdoor use locker. The Heavy Duty Weather Resistant Lockers are designed to suit grueling amounts of use in all conditions, being water present, UV exposure and high traffic use. They are the perfect locker solution for any outdoor use in a school, fitness centre, or swimming pools (amongst other settings).

**Size Options:** With a variety of door sizes available locker arrangements can combine alternate sizes to build a unit that suits your requirements.

**Weather resistant** The Heavy Duty Lockers are water resistant\* and UV resistant, making them the ideal solution for harsh outdoor conditions.

Chat with your sales representative which is the ideal locker for your environment.

**Colours:** Individual units and even individual doors can have different colours to brighten up any space.

Chat with your sales representative to discuss which is the ideal locker for your environment.



\*Please note lockers are not waterproof.

- ▶ Variety of door configurations
- ▶ Water resistant\*
- ▶ UV resistant
- ▶ Strong and resistant to damage
- ▶ Easy clean
- ▶ Low maintenance
- ▶ Height adjustable feet available
- ▶ Recyclable
- ▶ 20 year indoor/8 years outdoor warranty

## TECHNICAL SPECIFICATIONS

### Standard Sizes (mm)

Half Height - 910H x 388W x 500D

Third Height - 610H x 388W x 500D

Quarter Height - 460H x 388W x 500D

\* 80mm base required per tier/column

## MULTIPLE LOCKING OPTIONS



## COLOURS AVAILABLE

(Carcass/Base)  Marble

(Doors)

Red
  Yellow
  Green
  Blue
  Coffee
  Grey





# CUSTOMISATION

**STEELCO** products  
can be customised

Add a splash of colour to your work environment. STEELCO can manufacture all of their products in a multitude of colours. Whether adding some fun in to a school or sport centre or to accentuate your businesses branding!

Chat with your local OLP representative and find out how we can help your customers create their ideal environment

# STEELCO STEEL POWDERCOAT COLOUR OPTIONS

We provide a comprehensive range of robust steel lockers to suit the demanding conditions of your school environment. Our lockers are designed and manufactured to the highest standards and are available in a variety sizes and powder coated finishes.

## Stock colours available



White Satin    Silver Grey    Graphite Ripple    Black Satin

## Non-Stock colours available



Satin Silver    Light Grey    Grey    Dark Grey    Blaze Blue    Oxford Blue  
Lawn Green    Beige    Signal Red    Orange    Dark Yellow    Lemon Yellow

10 - 12 week lead time for non stocked and custom colours.  
Please refer to OLP price list for products stocked in standard colours.  
Lead time may vary depending on source of product.  
Stock colours vary between products.  
For Dulux, Interpon or RAL colours, please contact your sales representative.  
Surcharge and minimum volumes may apply.



# STEELCO LAMINATE COLOUR OPTIONS

## STOCK COLOUR RANGE AVAILABLE

\*No MOQ - Lockers stocked nationally



Natural Oak



White

## NON-STOCK COLOUR RANGE AVAILABLE

\*No MOQ - Lead time 10 - 12 weeks



Natural Beech



Natural Birch



Black

## NON-STOCK COLOUR RANGE AVAILABLE

\*MOQ - 20 lockers/colour - lead time 10 - 12 weeks



DH-027



DH-802



DH-803



DH-902



DH-916



XG-1908



XG-1909



XG-1910



XG-1917

For more colours available for local laminate lockers refer to the [Laminex](#) and [Polytec](#) websites. Chat with your friendly sales representative to find out all the colour options on offer.

## NON-STOCKED COMPACT LAMINATE COLOUR AVAILABLE

\*No MOQ - Lead time 10 - 12 weeks



Oak

Visit [OLP](#) to view colour range

# STEELCO ABS & HDPE LOCKERS COLOUR OPTIONS

## STEELCO HDPE LOCKER COLOURS

### STOCK COLOURS AVAILABLE



Red



Yellow



Green



Blue



Grey

### NON-STOCK COLOURS AVAILABLE



Coffee

Visit [OLP](#) to view colour range

## STEELCO ABS LOCKER COLOURS

### STOCK COLOURS AVAILABLE



Red



Yellow



Green



Blue

### NON-STOCK COLOURS AVAILABLE



Pink



Light Blue



Orange



Lime Green



Grey



Coffee

Visit [OLP](#) to view colour range

# CUSTOMISED LOCKERS

Steelco products can be custom designed and manufactured to specific design requirements to take full advantage of any given space. Bringing in colour themes to match a companies branding, with products using popular paint brands and Laminex. The customisations we can make are endless!

Additional options: In-built power options to conveniently charge devices while stored, choices of USB-A & USB-C chargers, GPO, and wireless charger.

- ▶ Designed and manufactured to your specific design requirements
- ▶ Custom sizes to fit any space
- ▶ Custom perforation
- ▶ A diverse range of standard perforation patterns are available
- ▶ Uniquely designed custom perforation patterns can also be created
- ▶ Available with most STEELCO products



Collaboration table

\*Soft wiring accessories sold separately

# POWER & SMART LOCKERS

Built-in multi charging units that can provide you with all the conveniences. Our range of lockers have individual compartments and charging outlets, perfect for schools, universities and work environments. Units are ventilated to prevent overheating.

**Installation:** Quick and easy and can be installed for use in workspaces, meeting tables, living room furniture, or Sit Stand workstations.

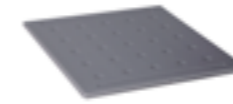
**Additional options:** In-built power options to conveniently charge devices while stored, choices of USB-A & USB-C chargers, GPO, and wireless charger.

- ▶ Modern, sleek design
- ▶ Available in all STEELCO products
- ▶ Ability to charge various devices, including, smartphones, tablets, wireless earbuds
- ▶ Certified for Australian & International standards

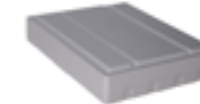


# LOCKER ACCESSORIES

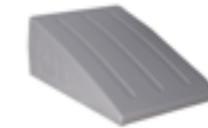
Lockers are not where OLP storage finishes. We offer a full range of locker accessories to optimise the use of your locker storage and requirements to ensure all your clients belongings are kept neat and safe while not in use.



Heavy-duty shelf



Heavy-duty base



Heavy-duty sloping top



Locks (see page 45)



Hanging rail



Vent Cover



Locker ID numbers



Planter box



Steel plinth



Sloping top



Locker stand & Bench



Locker stand



Bench & shoe rack



Island bench

To view our full range of accessories and which lockers they are best suited to please contact your local sales representative or visit [olp.com.au](http://olp.com.au)

# LOCKING MECHANISMS

We provide a range of locking options that satisfy different levels of security required. For the complete list of which lock category is compatible with each locker, please see the table below.

PRODUCT	KEY	PAD	COM	DIG	RFID	COIN
HDPE Lockers	✓	✓	✓	✓	✓	✓
Heavy Duty School Lockers		✓				
Steel Lockers	✓	✓	✓	✓	✓	✓
Phone & Key Lockers	✓	✓	✓	✓	✓	
Laptop Lockers	✓	✓	✓	✓	✓	
ABS Plastic Lockers	✓	✓	✓	✓	✓	
Laminate Locker	✓	✓	✓	✓	✓	
Heavy Duty Weather Resistant Lockers	✓	✓	✓	✓		✓

**LEGEND** KEY: Key Lock  
 PAD: Padlock  
 COM: Combination Lock  
 DIG: Digital Lock  
 RFID: Radio Frequency Identification  
 COIN: Coin Operated Lock

## COMBINATION LOCKS

### Key Benefits:

- ▶ Keyless convenience
- ▶ User's set the lock's code
- ▶ Master key for emergency openings
- ▶ Lost codes are retrievable
- ▶ Up to 10,000 combinations



05-113



09-006 black  
09-007 white



09-005

## PUSH BUTTON DIGITAL LOCKS

### Key Benefits:

- ▶ Common battery compatible models
- ▶ User's set the lock's code
- ▶ Public or private modes
- ▶ In use indicator
- ▶ Millions of combinations



09-024



09-025

## TOUCH PAD DIGITAL LOCKS

### Key Benefits:

- ▶ Common battery compatible models
- ▶ User's set the lock's code
- ▶ Keyless convenience
- ▶ Public or private mode
- ▶ Millions of combinations



09-009



09-010



09-018

## RFID LOCKS

### Key Benefits:

- ▶ Common battery compatible models
- ▶ Mifare1 format
- ▶ Public or private modes
- ▶ Keyless convenience
- ▶ Interminable combinations



09-013



Special Order

For more information or special orders on locks please contact your local sales representative or visit [olp.com.au](http://olp.com.au)



# STEELCO

## Office space living

OLP are the exclusive suppliers of the STEELCO range of office furniture.

STEELCO provides quality products, tested to a high standard meeting both Australian and International certifications.

Bringing storage solutions to schools, offices, sport centres, health and mining industries.





# STEELCO EDGE MODULAR RANGE

NEW

The STEELCO Edge Modular Range has been designed for the modern workplace. With smaller, more dynamic designs than the average piece of office furniture, it is stylish yet functional in any environment. Each module can be stacked together, with multiple configurations and finishes available, your options are endless with this system.

**Product Range:** Our Edge Modular Range has a diverse range of furniture options including office pedestals, cabinets, lockers, and filing cabinets.

**Size Modifications:** If our standard sizes do not suit your needs, a customised unit can be designed.

**Slim Design:** Designed with a minimal 5mm carcass, the Edge Modular Range is perfect for spaces wanting to maximise space and look stylish.

- ▶ Range of furniture options
- ▶ 5mm slim carcass
- ▶ Laminate timber doors
- ▶ Quality powder coated finish
- ▶ 10 year Warranty

## TECHNICAL SPECIFICATION

### Standard Sizes (mm)

#### Office Pedestal with Timber Laminate Front

Box/ Box/ Box Design  
450H x 390W x 500D

#### Box/ Box/File Design

610H x 390W x 500D

#### Modular Open Cabinet

1 Tier 1200mmH Overhead Cupboard - 1200H x 800W x 450D

1 Tier 800mmH Ground Cupboard - 800H x 800W x 450D

2 Tier 1200mmH 1 Open Shelf Cupboard - 1200H x 800W x 450D

2 Tier 800mmH 1 Open Shelf Cabinet - 800H x 800W x 450D

3 Tier 1200mmH 1 Open Shelf 2 Doors Cabinet - 1200H x 800W x 450D

3 Tier 1200mmH 2 Open Shelf 1 Door Cabinet - 1200H x 800W x 450D

#### Modular Planter Box

250H x 800W x 450D

## STOCK COLOURS AVAILABLE

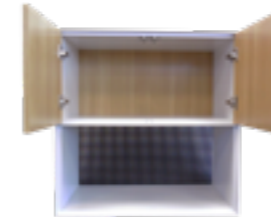
Due to the diverse nature of the Edge Range, please refer to our website for more information regarding the colour and finish options on specific products.



# EDGE MODULAR RANGE



O2-402



O2-404



O2-406



O2-408



O2-401



O2-405



O2-409



O2-411



O2-406



O2-410



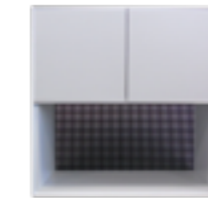
O2-412



O2-412



O2-403



O2-407



Special Order



O8-004

Units can be stacked in different arrangements to suit your preference (ie. 2 Shelf Cabinet with door topped by a 1 shelf open cabinet).



# ORGANISED

## Steelco Concept

With a first class customer service team that will ensure we deliver on time, and in full. OLP take the hassle away from purchasing and provide a truly trouble-free experience.

With a Nationwide footprint, having locations all across Australia and New Zealand, at OLP we deliver a trouble-free, complete service, ensuring our reseller network receive high quality product, with a fast turnaround. Our products are always growing and adapting to the needs of today's consumers, be it with the launch of new products, or the large increase in available colour range.

OLP - Storage



# STEELCO VERTICAL FILING CABINET RANGE

STEELCO Vertical Filing Cabinets have been created specifically for commercial use and are ideal for high volume storage where floor storage space is restricted.

**AFRDI Certified:** STEELCO Vertical filing Cabinets have been Blue Tick AFRDI approved,

**Colours:** Individual units and even individual drawers can be custom painted to different colours.

**Recessed Handle:** The recessed handle provides a large opening for your hand, allowing simple and smooth opening and closing of the drawers.

**VFC Planter Box:** An optional accessory brings life to any space, allowing some natural plant life to seamlessly fit into your workspace.

- ▶ Recessed Handle
- ▶ Heavy-duty double extension ball bearing runners
- ▶ Anti-tilt mechanism installed
- ▶ Drawer fronts include full-length label holder for easy identification
- ▶ Fitted with barrel exchange locks
- ▶ 35kg drawer capacity uniformly distributed load
- ▶ 10 year warranty







## TECHNICAL SPECIFICATIONS

### Standard Sizes (mm)

- 2 Drawer - 710H x 470W x 620D
- 3 Drawer - 1015H x 470W x 620D
- 4 Drawer - 1320H x 470W x 620D

## STOCK COLOURS AVAILABLE

-  White Satin
-  Silver Grey
-  Graphite Ripple
-  Black Satin

## LOCKING MECHANISM

- Key Lock (Standard)
- Digital Lock



VFC Planer box - not included



# MERCURY VERTICAL FILING CABINET RANGE

Mercury Vertical Filing Cabinets have been created specifically for the storage of high volumes of filing. Perfect for any work environment.

- AFRDI Certified:** Mercury Vertical Filing Cabinets have been Blue Tick AFRDI approved,
- Colours:** Individual units and even individual drawers can be custom painted to different colours.
- T-Handle:** The T-handle provides a large opening for your hand, allowing simple and smooth opening and closing of the drawers.
- VFC Planter Box:** An optional accessory brings life to any space, allowing some natural plant life to seamlessly fit into your workspace.

## TECHNICAL SPECIFICATIONS

### Standard Sizes (mm)

- 2 Drawer - 710H x 470W x 620D
- 3 Drawer - 1015H x 470W x 620D
- 4 Drawer - 1320H x 470W x 620D

### Planter Box available as an extra

- ▶ T-Handle Drawer System
- ▶ Heavy-duty double extension ball bearing runners
- ▶ Anti-tilt mechanism installed
- ▶ Label holder included
- ▶ Fitted with barrel exchange locks
- ▶ 30kg drawer capacity
- ▶ 10 year warranty

## LOCKING MECHANISM

- Key Lock (Standard)
- Digital Lock

## STOCK COLOURS AVAILABLE

-  White Satin
-  Silver Grey
-  Graphite Ripple
-  Black Satin



Vertical Cabinet Planter Box

# STEELCO LATERAL FILING CABINET

STEELCO Lateral Filing Cabinets have been created specifically for commercial use and are ideal for high volume storage where floor storage space is restricted.

**Anti-Tilt Mechanism:** These units are fitted with an anti-tilt mechanism, allowing only one drawer to open at a time for safety purposes. Due to the weight of the product, a counterweight has also been installed for added stability.

**AFRDI Certified:** Steelco Lateral Filing Cabinets have been Blue Tick AFRDI approved,

**Colours:** Individual units and even individual drawers can be custom painted different colours to brighten up any room.

## TECHNICAL SPECIFICATIONS

### Standard Sizes (mm)

2 Drawer - 710H x 915W x 463D

3 Drawer - 1015H x 915W x 463D

4 Drawer - 1320H x 915W x 463D

4 Drawer + Flipper - 1770H x 915W x 463D

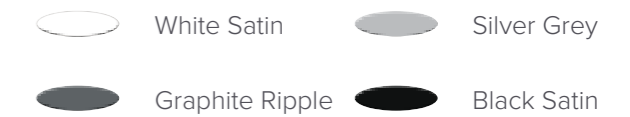
- ▶ Recessed Handle
- ▶ Heavy-duty double extension ball bearing runners
- ▶ Anti-tilt mechanism installed
- ▶ Internal adjustable frame to adjust for fooscap or A4 filing
- ▶ Drawer fronts include full-length label holder for easy identification
- ▶ Fitted with barrel exchange locks
- ▶ 35kg drawer capacity uniformly distributed load
- ▶ 10 year warranty

## LOCKING MECHANISM

Key Lock (Standard)

Digital Lock

## STOCK COLOURS AVAILABLE



Health Service fit out



# STEELCO CLASSIC MOBILE PEDESTAL RANGE

# STEELCO TRIMLINE MOBILE PEDESTAL RANGE

Mobile Pedestals offer secure and compact under desk storage for suspension files and smaller office items. These lockable pedestals feature castor wheels which allow the cabinet to be moved with ease. STEELCO's Classic Mobile Pedestal is the only pedestal in OLP's Products range that is also available with 2 File drawers. This is made to suit those who require more room for filing.

This Trimline Mobile Pedestal range is modern and sleek fitting easily under home and office desk to storage all your small accessible items on hand.

**Size Modifications:** Special sized mobile pedestals can be designed and manufactured to suit any specific purposes.

**Opening Capacity:** The mobile pedestal range are fitted with full extension ball bearing runners, allowing full drawer access.

**AFRDI Certified:** The STEELCO Classic and Line Ranges of Mobile Pedestals have achieved Blue Tick AFRDI certification.

- ▶ Anti-tilt mechanism installed
- ▶ Includes pencil tray in 3 drawer version
- ▶ Lockable castor wheels
- ▶ Quality powder coated finish
- ▶ 10 year warranty

- ▶ Anti-tilt mechanism installed
- ▶ Five lockable castor wheels to increase stability
- ▶ Full-extension ball bearing runners fitted for full drawer access
- ▶ Quality powder coated finish
- ▶ 10 year warranty

**Size Modifications:** Special sized mobile pedestals can be designed and manufactured to suit any specific purposes.

**Opening Capacity:** The mobile pedestal range are fitted with full extension ball bearing runners, allowing full drawer access.

**AFRDI Certified:** The STEELCO Classic and Line Ranges of Mobile Pedestals have achieved AFRDI Blue & Green Tick certification (ask us more).

## TECHNICAL SPECIFICATIONS

### Standard Sizes (mm)

Classic Range -  
2 Box, 1 File Drawer - 630H x 470W x 515D

Classic Range -  
2 File Drawer - 630H x 470W x 515D

### AVAILABLE LOCK OPTIONS

Key Lock



### STOCK COLOURS AVAILABLE

Classic Range  White Satin  Silver Grey  Graphite Ripple

## TECHNICAL SPECIFICATIONS

### Standard Sizes (mm)

Trimline Range - 2 Box, 1 File Drawer - 615H x 390W x 500D

### AVAILABLE LOCK OPTIONS

Key Lock



### STOCK COLOURS AVAILABLE

Line Range  White Satin  Satin Silver  Black Satin

# STEELCO HYBRID TRIMLINE MOBILE PEDESTAL RANGE

The Hybrid Trimline Mobile Pedestal offers that point of difference with laminate front drawers a stylish addition to any workspace.

- ▶ Anti-tilt mechanism installed
- ▶ Internal adjustable frame to adjust for fooscap or A4 filing
- ▶ Includes pencil tray
- ▶ Lockable castor wheels
- ▶ Quality powder coated finish
- ▶ 10 year warranty

## TECHNICAL SPECIFICATIONS



### Standard Sizes (mm)

Trimline Range -  
2 Box, 1 File Drawer - 615H x 390W x 500D

## AVAILABLE LOCK OPTIONS

Key Lock

## STOCK COLOURS AVAILABLE

-  White Carcass
-  Natural Beech Drawer Fronts

Due to the diverse nature of the Edge Modular Range, please refer to our website for more information regarding the colour and finish options on specific products.



# STEELCO SLIMLINE MOBILE PEDESTAL RANGE

This modern-looking Mobile Pedestal range has the smallest width compared with the average pedestal at 300mm and is designed to look stylish under any office desk.

- ▶ Anti-tilt mechanism installed
- ▶ Five lockable castor wheels to increase stability
- ▶ Full-extension ball bearing runners fitted for full drawer access
- ▶ Quality powder coated finish
- ▶ 10 year warranty

## TECHNICAL SPECIFICATIONS

### Standard Sizes (mm)




Slimline Range -  
2 Box, 1 File Drawer - 615H x 300W x 500D

## AVAILABLE LOCK OPTIONS

Key Lock

## STOCK COLOURS AVAILABLE

### Line Range

-  White Satin
-  Satin Silver
-  Black Satin





# STEELCO MINI MOBILE PEDESTAL RANGE

The STEELCO Mini Mobile Pedestal is the perfect small option for under desk storage. This sleek trim mobile pedestal range is slightly smaller and dynamic than the average pedestal and is designed to look stylish under any office desk.

**Size Modifications:** Special sized mobile pedestals can be designed and manufactured to suit any specific purposes.

**Opening Capacity:** The mobile pedestal range are fitted with full extension ball bearing runners, allowing full drawer access.

- ▶ Anti-tilt mechanism installed
- ▶ Includes pencil tray
- ▶ Lockable castor wheels
- ▶ Quality powder coated finish
- ▶ 10 year warranty

### TECHNICAL SPECIFICATIONS

**Standard Sizes (mm)**  
490H x 390W x 500D

### AVAILABLE LOCK OPTIONS

Key Lock

### STOCK COLOURS AVAILABLE

-  White Satin
-  Black Satin



# STEELCO MOBILE CADDY RANGE

The STEELCO Mobile Caddy is ideal for under desk storage or as an extended workspace storage unit. This unit is available with either a Tambour side door or as an open shelf side and features two box drawers and one suspension file drawer.

**Left or Right:** The positioning of the drawer unit can be on the left or right to suit your desired layouts or uses.

**Sturdy and Strong:** The mobile caddy can be fitted with a cushioned seat to be used as a seat option

**Colours:** Various coloured door slats, drawers or carcasses can be applied to our mobile caddy to suit the look you are after.

**AFRDI Certified:** The STEELCO Trimline Mobile Caddy has been AFRDI Blue Tick & Green Tick approved,

- ▶ Anti-tilt mechanism installed Includes pencil tray
- ▶ Lockable castors to secure the unit Side storage unit available with or without Tambour door
- ▶ Fitted with barrel exchange locks
- ▶ 10 year warranty

### TECHNICAL SPECIFICATIONS

**Standard Sizes (mm)**  
615H x 1050W x 500D

### AVAILABLE LOCK OPTIONS

Key Lock

### STOCK COLOURS AVAILABLE

-  White Satin
-  Black Satin



\*Seat pad not included but available on request



# STEELCO STATIONERY/STORAGE CABINET RANGE

STEELCO Stationery Cabinets feature reinforced doors with a three-point locking system, ideal for storing documents and valuable items. Shelves can be adjusted in height to maximise storage capacity. Storage Cabinets are available in various heights, widths, and configurations.

**Size Modifications:** If our standard sizes do not suit your needs, a customised stationery cabinet can be designed and manufactured.

**Colours:** Various coloured doors or carcasses can be applied to our Stationery Cabinet to suit the look you are after.

- ▶ 180-degree opening capability
- ▶ 40kg UDL shelf capacity
- ▶ 3 point locking mechanism with key lock as standard
- ▶ 10 year warranty

## TECHNICAL SPECIFICATIONS

### Standard Sizes (mm)

- 2 shelves - 1015H x 914W x 463D
- 3 Shelves - 1830H x 914W x 463D
- 4 Shelves - 2000H x 914W x 463D

### LOCKING MECHANISM

Key Lock

### STOCK COLOURS AVAILABLE

-  White Satin
-  Silver Grey
-  Graphite Ripple



# STEELCO BOOKCASE RANGE

This versatile STEELCO Bookcase can be adjusted to suit any storage requirements. The unit features adjustable shelves and the option to purchase additional shelves to increase the storage capacity of the unit.

**Size Modifications:** If our standard sizes do not suit your needs, a customised stationery cabinet can be designed and manufactured.

**Finish:** Quality powder coated finish. Flush side panels for a cleaner finish.

**Accessories:** Available to help organise your book storage.

- ▶ Shelves are easily adjustable in 32mm increments
- ▶ 40kg shelf capacity uniformly Distributed Load (UDL)
- ▶ Additional shelves are able to be purchased
- ▶ Flush side panels for a cleaner finish
- ▶ 10 year warranty

## TECHNICAL SPECIFICATIONS

### Standard Sizes (mm)

- 3 Shelves - 1200H x 900W x 400D
- 3 Shelves - 1320H x 900W x 400D
- 4 Shelves - 2000H x 1200W x 400D
- 4 Shelves - 2000H x 900W x 400D

### STOCK COLOURS AVAILABLE

-  White Satin
-  Silver Grey
-  Graphite Ripple



# STEELCO PERSONNEL WARDROBE RANGE

STEELCO's Personnel Wardrobe offers a combination of hanging and shelf storage space. This product is ideal for storing personal items such as clothing, shoes, and helmets.

**Ventilation Holes:** Providing fresh air to the unit minimise odours that may arise from housing clothes within the wardrobe.

**Interior Accessories:** Designed to act as an all-purpose wardrobe, the unit is equipped with a mirror and hanging rail for clothes.



- ▶ Mirror fitted to the inside of the door
- ▶ Shelves are easily adjustable
- ▶ 180-degree opening capability
- ▶ 3 point locking mechanism with key lock as standard
- ▶ 10 year warranty

## TECHNICAL SPECIFICATIONS

**Standard Sizes (mm)**  
1830H x 914W x 463D

## MULTIPLE LOCKING OPTIONS

## STOCK COLOURS AVAILABLE

-  Silver Grey
-  Graphite Ripple



# STEELCO MULTI-FUNCTIONAL CABINET RANGE

STEELCO Multi-functional Cabinets allow the ability to sort and securely store all your smaller items. Drawer dividers (to fit various small to medium sized objects) are available to provide an organised and structured storage solution.

**Size Modifications:** If our standard sizes do not suit your needs, a customised stationery cabinet can be designed and manufactured.

**Colours:** Various coloured doors or carcasses can be applied to our Multi-functional Cabinet to suit the look you are after.

- ▶ Plastic parts bins can be used for small parts storage
- ▶ Ball-bearing runners
- ▶ Key lock as standard
- ▶ 30kg UDL shelf capacity
- ▶ Quality powder coated finish
- ▶ 10 year warranty



## TECHNICAL SPECIFICATIONS

**Standard Sizes (mm)**  
7 Drawers - 1320H x 790W x 620D  
10 Drawers - 1370H x 700W x 620D

## LOCKING MECHANISM

Key Lock (Standard)

## STOCK COLOURS AVAILABLE

-  Silver Grey
-  Graphite Ripple



# STEELCO PLAN CABINET RANGE

STEELCO Plan Cabinets are designed specifically to store and protect plans, drawings, and maps. The drawer size allows for paper up to size A0.

**Size Modifications:** If our standard sizes do not suit your needs, a customised plan cabinet can be designed and manufactured.

**Colours:** Various coloured drawers or carcasses can be applied to our Plan Cabinet to suit the look you are after.

- ▶ Depressor lip within the drawer secures documents
- ▶ 15kg drawer capacity
- ▶ 10 year warranty

## TECHNICAL SPECIFICATIONS

### Standard Sizes (mm)

Standard - 851H x 1375W x 960D

Without Stand - 628H x 1375W x 960D

## STOCK COLOURS AVAILABLE



# STEELCO PULL-OUT TOWER

The STEELCO Pull out Tower range offers an innovative approach to personal storage, providing up to three times more personal storage in the same footprint as a standard pedestal.

With the added bonus of expandable privacy, the tower creates a personal nook for the user

Personalized attachments can be added to create a unique user environment, including pin board, acoustic panel, planter box and white board.

Pull out towers are specially ordered in according to customer's size requirement.

Internal options include, adjustable shelves.

- ▶ Available in single sided and double sided
- ▶ Indent only
- ▶ Standard and custom colour range available
- ▶ Custom sizes available

## TECHNICAL SPECIFICATIONS

### Suggested Size Range (mm)

1000H x 400W x 800D

1200H x 400W x 800D

1000H x 450W x 800D

1200H x 450W x 800D

## LOCKING MECHANISM

Key Lock



# STEELCO TAMBOUR CABINET RANGE

**STEELCO Tambour Cabinets are ideal for office storage needs. With retractable doors and adjustable shelves, you will be able to easily store a variety of office goods. Ideal for workstations, confined spaces, narrow corridors and an array of office environments.**

**Size Modifications:** If our standard sizes do not suit your needs, a customised Tambour Cabinet can be designed and manufactured.

**Colours:** Various coloured door slats or carcasses can be applied to our Tambour Cabinet to suit the look you are after.

**AFRDI Certified:** The STEELCO Tambour Cabinet has achieved blue tick certification.

- ▶ Retractable doors
- ▶ Adjustable interior levelling feet
- ▶ 40kg UDL shelf capacity
- ▶ 10 year product warranty



## TECHNICAL SPECIFICATIONS

### Standard Sizes (mm)

- 2 Shelves - 1015H x 900W x 463D
- 2 Shelves - 1015H x 1200W x 463D
- 3 Shelves - 1200H x 900W x 463D
- 3 Shelves - 1200H x 1200W x 463D

- 3 Shelves - 1320H x 900W x 463D
- 3 Shelves - 1320H x 1200W x 463D
- 5 Shelves - 2000H x 900W x 463D
- 5 Shelves - 2000H x 1200W x 463D



## LOCKING OPTIONS

Key Lock (Standard)

## STOCK COLOURS AVAILABLE

-  White Satin
-  Silver Grey
-  Black Satin



Health Services fit out

# STEELCO SLIDING DOOR CABINET RANGE

STEELCO Sliding Door Cabinets are ideal for narrow spaces as the doors do not interfere with walkways. With the option to transform the doors into a glass presentation cabinet, or have sound reducing acoustic doors fitted, there is something for every occasion.

**Size Modifications:** If our standard sizes do not suit your needs, a cabinet can be designed and manufactured.

**Colours:** Various coloured doors or carcasses can be applied to our Cabinet Range to suit the look you are after.

**Acoustic or Glass Panels:** The Sliding Door Cabinets can be fitted with an acoustic-rated sound-absorbing material to minimise noise disturbances in the workplace, hidden behind a perforated pattern. Glass paneling can also be fitted to the doors for easy visibility of the contents.

- ▶ Can be used in a walkway or aisle space without causing interference
- ▶ Adjustable interior levelling feet
- ▶ 40kg UDL shelf capacity
- ▶ 10 year warranty

## TECHNICAL SPECIFICATIONS

### Standard Sizes (mm)

- 2 Shelves - 1015H x 914W x 463D
- 3 Shelves - 1830H x 914W x 463D
- 2 Shelves - 1015H x 1500W x 463D
- 3 Shelves - 1830H x 1500W x 463D

## LOCKING OPTIONS

Key Lock (Standard)

## STOCK COLOURS AVAILABLE

-  White Satin
-  Silver Grey
-  Graphite Ripple



Acoustic Sliding Door Cabinet



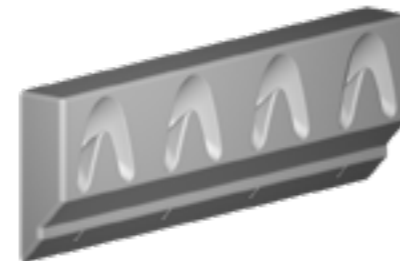
# SNUGHOOKS

Snughooks represent the latest and safest hook on the market. Snughooks are smooth-faced, recessed hooks; Eliminating the dangers associated with protruding wall hooks. Snughooks are ideal for educational institutes and public areas and can be used to store items such as school bags, minimising potential trip hazards.



St George Christian School

**Safe:** With no protruding hooks or sharp edges the Snughook is one of the safest hook systems on the market.  
**Strong:** Built to last. Flame retardant, UV stabilised and rated to support a combined load of 120kg.



- ▶ No protruding hook
- ▶ No sharp edges
- ▶ Australian owned, designed and made
- ▶ UV resistant
- ▶ Wall fixing kit included
- ▶ 10 year warranty

### TECHNICAL SPECIFICATIONS

**Standard Sizes (mm)**  
 167H x 480W x 45D

### STOCK COLOURS AVAILABLE

-  White Satin
-  Grey

# UNI-SHELF®

Uni-Shelf® is a versatile storage system that can be easily added to or reconfigured, ideal for the growing business. This modular system can be made mobile with the addition of Aislesaver® runners and bases. Uni-Shelving® bays are available in various height and width configurations.

- ▶ Modular Design
- ▶ Adjustable shelf heights
- ▶ Australian Made
- ▶ Choice of steel shelf to take 50-150kgs shelf capacity (UDL) ea.
- ▶ Easy to add on extra bays
- ▶ 10 year warranty



### TECHNICAL SPECIFICATIONS

#### Standard Sizes (mm)

2175H x 900W x 400D  
 2175H x 1200W x 400D

More sizes available, chat to your local sales representative.

### STOCK COLOURS AVAILABLE

-  White
-  Cyber Grey



# STEELCO PIGEONHOLE SHELVING NEW

This versatile STEELCO Pigeonhole Shelving is ideal for storing categorised small items. Constructed from powder coated quality steel, it can be easily constructed by the user on site to save freight costs or the OLP team can arrange assembly.

## TECHNICAL SPECIFICATIONS

### Standard Sizes (mm)

20 compartments - 940H x 1000W x 386D  
 40 compartments - 1830H x 1000W x 386D

- ▶ All steel construction
- ▶ Available in 20 or 40 compartments
- ▶ DIY assembly
- ▶ Slide in dividers offering flexibility
- ▶ Available in two colours
- ▶ Quality powder coated finish
- ▶ 3 year warranty

**Size Modifications:** If our standard sizes do not suit your needs, a customised stationery cabinet can be designed and manufactured.

## STOCK COLOURS AVAILABLE

- White Satin
- Black Satin



# STEELCO T-SPAN<sup>®</sup> SHELVING NEW

Introducing the new STEELCO T-Span<sup>®</sup> Shelving solution. This exceptionally strong and versatile system has adjustable heights shelving, with the option to add on extra bays.

- ▶ Modular Design
- ▶ Adjustable shelf heights
- ▶ Up to 400kg Shelf Capacity (UDL)
- ▶ Easy to add on extra bays
- ▶ 10 year warranty

## TECHNICAL SPECIFICATIONS

### Starter Bay - Standard Sizes (mm)

2100H x 910W x 450D  
 2100H x 1110W x 450D  
 2100H x 1760W x 450D  
 2100H x 2160W x 450D  
 2100H x 910W x 600D  
 2100H x 1110W x 600D  
 2100H x 1760W x 600D  
 2100H x 2160W x 600D

## STOCK COLOURS AVAILABLE

- Two-tone Light/Dark Grey
- Light Grey
- Dark Grey





# EZI-SLIDE AISLESAVER<sup>®</sup>

The Ezi-Slide Aislesaver<sup>®</sup> (Mobile Shelving System) is a uniquely designed system that can be customised to suit any high-density storage requirement. The system is fitted with a discreet anti-tilt system for operator safety. Units are available in single or tandem bay widths.

**Size Modifications:** If our standard sizes do not suit your needs, a customised shelving unit can be designed and manufactured.

**Australian Made:** Manufactured in Perth using Australian Bluescope<sup>®</sup> steel, OLP can provide high-quality shelving, with a quick turn around.

- ▶ Key or Digital locking option Option for manual (push-pull)
- ▶ Adjustable shelves (25mm) increment
- ▶ Choice of steel shelf to take 50-150kgs shelf capacity (UDL) ea.
- ▶ 10 year warranty



## TECHNICAL SPECIFICATIONS

### Standard Sizes (mm)

Height	1875	2175	2375	
Width	750	900	1000	1200
Depth	300	400	450	600

## SYSTEM TYPES AVAILABLE

- Mechanical - Ezi Drive
- Manual - Ezi Slide

## COMPLIANCE

APC Uni-Shelf<sup>®</sup> is a simple yet versatile storage system that can be easily added to or reconfigured, making it ideal for any growing business. Compliant with the ASI Industry Guide for Hand Loaded Steel Shelving, Design & Installation and relevant Australian Standards.

**For further information about which standards applies, contact your local sales representative.**



EDI Downer - Perth

# EZI-DRIVE AISLESAVERS®

The Ezi-Drive Aislesaver® mobile shelving system provides an efficient solution for the storage of all types of commercial items such as filing, archive items. Designed and manufactured in Australia, the mechanical shelving system incorporates a robust chain drive and ergonomically designed hand wheel, capable of moving block-loads effortlessly.

**Size Modifications:** If our standard sizes do not suit your needs, a customised shelving unit can be designed and manufactured.

**Australian Made:** Manufactured in Perth using Australian Bluescope® steel, OLP can provide high-quality shelving, with a quick turn around.

**Acoustic Panels:** OLP's Aislesaver® can be fitted with an acoustic-rated sound-absorbing material to minimise noises in the office.

- ▶ System is fully lockable for added security
- ▶ Strong and durable, long lasting quality storage system
- ▶ Low profile track system minimise any potential tripping hazards
- ▶ Easy to operate and move Compliant with OH&S Standards
- ▶ Choice of steel shelf to take 50-150kgs shelf capacity (UDL) ea.
- ▶ 10 year warranty



## TECHNICAL SPECIFICATIONS

### Standard Sizes (mm)

Height	1875	2175	2375	
Width	750	900	1000	1200
Depth	300	400	450	600

## SYSTEM TYPES AVAILABLE

- Mechanical - Ezi Drive
- Manual - Ezi Slide

## COMPLIANCE

APC Uni-Shelf® is a simple yet versatile storage system that can be easily added to or reconfigured, making it ideal for any growing business. Compliant with the ASI Industry Guide for Hand Loaded Steel Shelving, Design & Installation and relevant Australian Standards.

For further information about which standards applies, contact your local sales representative.



Dye and Dunham

STEELCO

# AISLESAVER<sup>®</sup> ACCESSORIES

To best utilise the benefits of the Aislesavers<sup>®</sup>, explore our range of accessory options that you can incorporate to safely store all you important artifacts, archives, documents and media.



Powerhouse Museum - Sydney

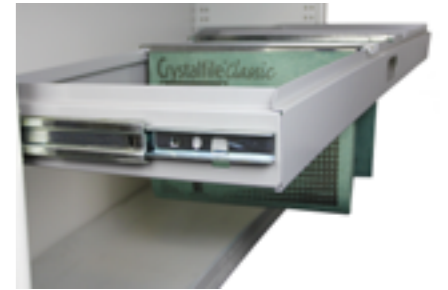
Issue #5



Pull out drawer + Plastic part tray



Pull-Out Reference Shelf



Pull-Out File Frame



Fixed Dividers



Wire File Rack



File Rack



Apparel Brackets and Pipe

# STEELCO HEIGHT ADJUSTABLE DESKS

A sleek, modern, European designed electric Height adjustable desk, featuring a 2-stage or 3-stage rectangular leg with dual motors, auto-reverse safety in both directions, programmable height settings and a one touch operation.

**Safety:** Auto reverse on both up and down movements.

**Handset:** One Touch operation with 3 Programmable settings in addition to up-down.

**Powder coated steel frame:** Available in black an white frames.

**Colours:** Different colours can be applied to desk top.

**In-built power charging:** Compartments can be fitted with GPO, USB and wireless options.

- ▶ Electric operation
- ▶ Speed - Standard = 25mmps  
De-Luxe = 35mmps
- ▶ Available in 2 desk sizes
- ▶ Available in 2-stages of height ranges
- ▶ 5-year warranty

## TECHNICAL SPECIFICATIONS

### Standard Worktop Sizes (mm)

1500W x 750D

1800W x 750D

### Height Ranges (mm)

Standard - 690 - 1190mm

De-Luxe - 600 - 1250mm

## STOCK COLOURS AVAILABLE

 White

 Black

## BUILT-IN DESKTOP CHARGING EXAMPLES



\*Soft wiring accessories sold separately



# STEELCO NORBA WORKSTATION

NEW

The STEELCO Norba Range is a highly versatile modern workplace solution. With a clean aesthetic featuring angular legs and a wide range of layout and storage options available, the Norba Workstation has an option to fulfill your needs.

**Unique Style:** The distinctive and unique angular legs and coloured desk screen makes the Norba Workstation a customisable and unique addition to any workplace.

**Desk Screen:** Optional fabric covered desk screens offer some privacy and adds a pop of colour.

**Wire Box:** With a sleek ABS plastic design, the wire box gives users direct access to cable ports to plug-in devices.

**Metal Cable Tray:** Affixed underneath the workstation, the cable tray cleans up any workspace by allowing the organisation of cables under the desk.

- ▶ Uniquely shaped angular legs
- ▶ More than 25 screen divider colours available (MOQ applicable)
- ▶ E1 grade environmental particle board
- ▶ Access space for office pedestal

## TECHNICAL SPECIFICATIONS

Standard Sizes (mm)

<b>O7-101 - 4 Person Workstation</b>	
with Bookcase	750H x 2800W x 1200D
<b>O7-102 - Meeting Table</b>	750H x 2400W x 1100D
<b>O7-103 - Executive Desk</b>	750H x 2100W x 1800D
<b>O7-104 - Bookcase</b>	1600H x 2200W x 350D

## STOCK COLOURS AVAILABLE

(10-12 Week Lead Time)

Bespoke colours available on request - please contact your local Business Development Manager

Frame

 Black

Screens

 Grey

Tops

 Natural Oak

Additional bespoke designs and sizes are available\*



O7-101



O7-102



O7-103



O7-104



# STEELCO CHAIRS

Work for longer in comfort with the right office chair. Perfect for a wide variety of situations, with the option for colour customisation, our chair range is ideal for the commercial, educational and healthcare environments.

**Comfortable Padding:** Optional fabric cushions can be added to the chairs to provide additional comfort.

**Sturdy and Strong:** The chairs have all been independently accredited by BIFMA to safely support 110kg.

**Colours:** Various coloured fabrics and plastics can be applied to our chair range to suit the look you are after.

**AFRDI Certified:** STEELCO Ace & Adam Chairs have been Blue Tick AFRDI approved.

## TECHNICAL SPECIFICATIONS

### STOCK COLOURS AVAILABLE

#### Ace & Curve Chair

 Black PVC seat & Chrome frame

#### Adam Chair

 Black Fabric Seat & Chrome Frame

 Black PVC Seat & Chrome Frame

- ▶ Lightweight Design
- ▶ Linking tips fitted to sled base 110kg BIFMA Accreditation
- ▶ Easily stacked and moved
- ▶ 5-year warranty

## CHAIR DESIGNS



Ace Chair



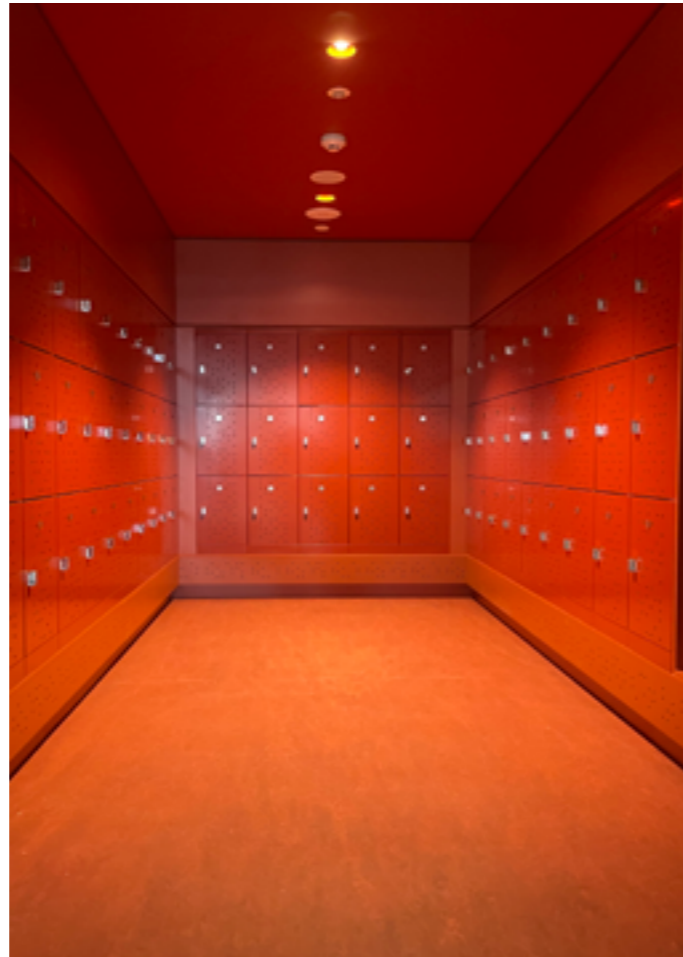
Adam Chair



Curve Chair



# RECENT PROJECTS





OLP-280-BRO-003  
Version: 1  
March 2024



Customer satisfaction is an imperative component of the comprehensive service that OLP provides. OLP strives to meet objectives and deliver products and services to meet our customer's needs.

OLP also endeavours to provide a better product and ongoing service, to do this we follow our ISO 9001:2015 certified quality management system.

### **BUSINESS DEVELOPMENT MANAGERS**

We are represented in every state of Australia & New Zealand. If you wish to get in touch with us, please contact your local sales representative.

**NSW & ACT** - Terry Longhurst  
**P:** 0422 199 724 **E:** [terry@olp.com.au](mailto:terry@olp.com.au)

**NSW & ACT** - Sam Mirkazemi  
**P:** 0400 585 535 **E:** [sam@olp.com.au](mailto:sam@olp.com.au)

**VIC & TAS** - Dean Fleming  
**P:** 0488 554 415 **E:** [dean@olp.com.au](mailto:dean@olp.com.au)

**QLD** - John Guesdon  
**P:** 0413 628 356 **E:** [john@olp.com.au](mailto:john@olp.com.au)

**WA, SA & NT** - Janise Howard  
**P:** 0411 750 475 **E:** [janise@olp.com.au](mailto:janise@olp.com.au)

**NZ** - Hannah Evans-Scott  
**P:** +64 223 028 485 **E:** [hannah@olpinternational.com](mailto:hannah@olpinternational.com)





OLP.COM.AU

Issue #5